



## ADC AD-35i 16kg TUMBLE DRYER



### MODELS:

ADC AD-35i

### DIMENSIONS:

HxWxD: 1720×810×1100mm

### CAPACITY:

16kg

#### IDEAL FOR:



PUBLIC SECTOR



EDUCATION

### FEATURES:

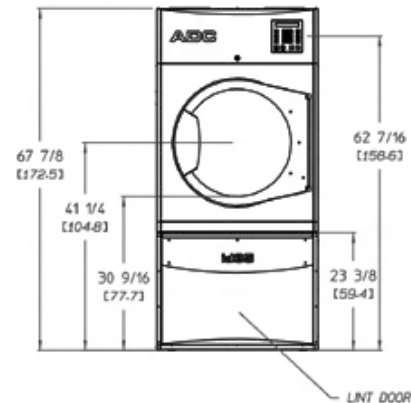
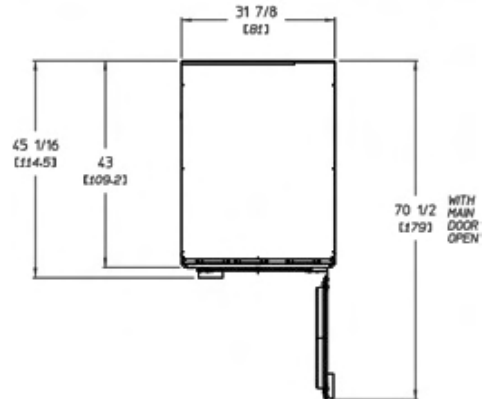
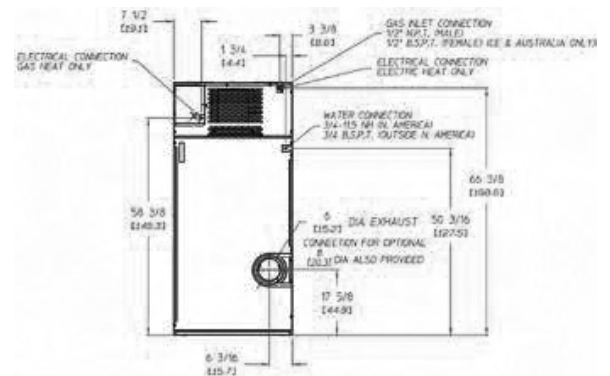
- ▶ Variable drum speed
- ▶ Pre-heat system
- ▶ Trans-axial airflow
- ▶ Fully insulated cabinet
- ▶ Double pane door glass
- ▶ Self-cleaning lint screen
- ▶ Direct spark ignition
- ▶ Two-point roller support
- ▶ Simplified inverter drive system
- ▶ Fits through standard 36" door
- ▶ Available in gas & electric
- ▶ Single-phase reversing basket
- ▶ Stainless steel basket and fronts

### SYSTEMS:

- "IMC®" intuitive micro control with autodry system
- S.A.F.E

**ONECARE<sup>cc</sup>** This machine is eligible for our all inclusive service solution, One Care.

|                             |                               | <b>AD-35i</b>               |         |        |         |
|-----------------------------|-------------------------------|-----------------------------|---------|--------|---------|
| <b>Application features</b> |                               |                             |         |        |         |
| Tumbler Capacity            | kg (lb)                       | 16                          | (35)    |        |         |
| Tumbler Diameter            | cm                            | 76.2                        |         |        |         |
| Tumbler Depth               | cm                            | 74.61                       |         |        |         |
| Tumbler Volume              | litres                        | 339.80                      |         |        |         |
| Tumbler/Drive Motor         | kW                            | 0.75                        |         |        |         |
| Blower/Fan Motor            | kW                            | 0.37                        |         |        |         |
| Door Opening (Diameter)     | inches (cm)                   | 31-3/8                      | (79.69) |        |         |
| Door Sill Height            | inches (cm)                   | 28                          | (71.12) |        |         |
| <b>Water connection</b>     |                               |                             |         |        |         |
| S.A.F.E. Water Connection   | inches                        | 3/4                         |         |        |         |
| <b>Dimensions</b>           |                               |                             |         |        |         |
| Width                       | mm                            | 810                         |         |        |         |
| Depth                       | mm                            | 1100                        |         |        |         |
| Height                      | mm                            | 1720                        |         |        |         |
| <b>Connection</b>           |                               |                             |         |        |         |
| <b>GAS</b>                  | Voltage Available             | 120-480V 1,3ø 2,3w 50/60 Hz |         |        |         |
|                             | Approximate Net Weight        | kg                          | 251     |        |         |
|                             | Approximate Shipping Weight   | kg                          | 265     |        |         |
|                             | Airflow                       | cfm                         | 265     |        |         |
|                             | Heat Input                    | Btu/hr                      | 70,000  |        |         |
|                             | Exhaust Connection (Diameter) | inches                      | 6 or 8  |        |         |
| Inlet Pipe Connection       | inches                        | 1/2 B.S.P.T. (Female)       |         |        |         |
| <b>ELECTRIC</b>             | Voltage Available             | 120-480V 1,3ø 2,3w 50/60 Hz |         |        |         |
|                             | Approximate Net Weight        | kg                          | 253     |        |         |
|                             | Approximate Shipping Weight   | kg                          | 265     |        |         |
|                             | Airflow                       | kg                          | 267     |        |         |
|                             | Heat Input                    | cfm                         | 280     |        |         |
|                             | Exhaust Connection (Diameter) | inches                      | 6 or 8  |        |         |
|                             | Oven Size                     |                             | kW      | Btu/hr | kcal/hr |
|                             |                               |                             | 13.5    | 46,074 | 11,611  |
|                             |                               |                             | 12.4    | 42,310 | 10,662  |
|                             |                               |                             | 11.3    | 38,557 | 9,716   |
|                             |                               | 10.1                        | 34,462  | 8,684  |         |
|                             |                               | 9.0                         | 30,709  | 7,739  |         |
|                             |                               | 8.3                         | 28,320  | 7,137  |         |
|                             | 7.5                           | 25,519                      | 6,449   |        |         |
|                             | 6.7                           | 22,861                      | 5,761   |        |         |



Specifications in parentheses are metric equivalents.

\* Reversing Dryers use 3-phase (3ø) motors.

•• Air-operated steam damper system requires a clean, dry, and regulated 80 psi +/- 10 psi (5.51 bar +/- 0.69 bar) air supply.