



ADC AD25V TUMBLE DRYER



MODELS:

ADC AD-25V

DIMENSIONS:

HxWxD: 1829×870×756mm

CAPACITY:

13kg

IDEAL FOR:



PUBLIC SECTOR



INDUSTRIAL

FEATURES:

- ▶ 9.26 cu ft basket volume
78,000 Btu/hr heat input, 460 cfm airflow
- ▶ Radial airflow
- ▶ Steel door with gasketless glass
- ▶ Easy access to lint compartment
- ▶ Fits through a standard 30" door
- ▶ Available in gas, steam and electric heat
- ▶ Easy to read LED screens
- ▶ User-friendly multilingual interface positions

SAFETY SYSTEMS

- ▶ S.A.F.E Sensor Activated Fire Extinguishing System - We've eliminated fire concerns with our patented S.A.F.E. system that automatically senses a fire condition, immediately dispenses water to extinguish it, then shuts itself down, eliminating water damage and cleanup.

ONECARE^{cc} This machine is eligible for our all inclusive service solution, One Care.

AD-25V

Application features

Tumbler Capacity (dry weight)	kg (lb)	30 (13)
Tumbler Diameter	inches (cm)	32-3/4 (83.2)
Tumbler Depth	inches (cm)	19 (48.3)
Tumbler Volume	cu ft (litres)	9.26 (262.2)
Tumbler/Drive Motor	hp (kW)	1/2 (0.373)
Blower/Fan Motor	kW	N/A
Door Opening (Diameter)	inches (cm)	21-1/2 (54.61)
Door Sill Height	inches (cm)	31 (78.74)

Water connection

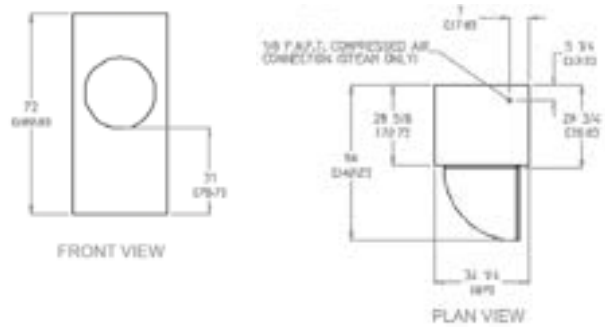
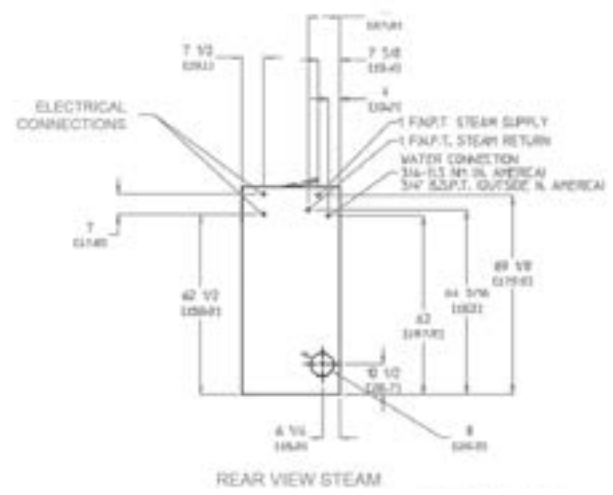
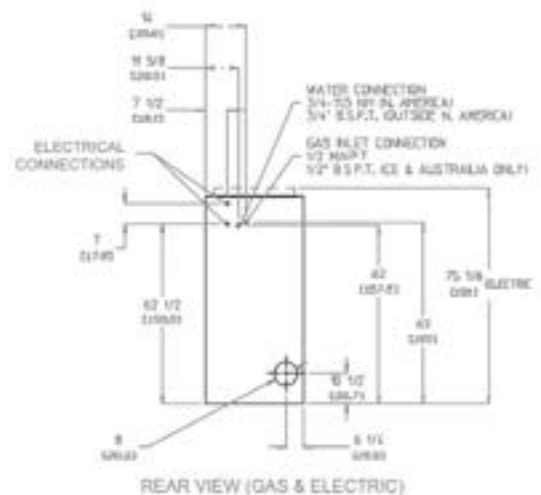
S.A.F.E. Water Connection	inches	3/4
---------------------------	--------	-----

Dimensions

Width	mm	870
Depth	mm	756
Height (Gas Model)	mm	1630
Height (Electric Model)	mm	1910
Airflow - gas/electric/steam 50 Hz	cfm	383
Exhaust Connection	inches	8

Connection

GAS MODEL***	Approx. Net Wt.	lbs (kg)	407 (184.6)	
	Approx. Ship Wt.	lbs (kg)	446 (202.1)	
	Heat Input	Btu/hr (kcal/hr)	78,000 (25,200)	
	Inlet Pipe Connection	inches	1/2 B.S.P.T. (CE and Australia Only)	
ELECTRIC	Approx. Net Wt.	lbs (kg)	534 (242)	
	Approx. Ship Wt.	lbs (kg)	571 (259)	
	Exhaust Connection	inches (cm)	8 (20.32)	
		kW	Btu/hr	kcal/hr
		15	51,200	(12,900)
	20	68,200	(17,200)	
	24	81,900	(20,600)	



Specifications in parentheses are metric equivalents.
 * Reversing dryer available with 3-phase (3Ø) 1/2 hp (0.373 kW) motors standard. **Size of piping to dryer varies with installation conditions. Contact factory for assistance.
 ***Specify air-operated or electromechanical steam damper system. Air-operated steam damper system must be provided with clean, dry, and regulated 80 psi +_ 10psi (5.52 bar +_ 0.68 bar) air supply.