



PRIMUS FX LINE WASHING MACHINES

MODELS:

FX80
FX105
FX135

DIMENSIONS:

HxWxD: 1115x710x790mm
HxWxD: 1225x795x795mm
HxWxD: 1225x795x945mm

CAPACITY:

9kg
12kg
15kg

IDEAL FOR:



HEALTHCARE



HOSPITALITY

FEATURES:

- ▶ Stainless steel top, drum and tub and anthracite front and side panel
- ▶ Patented soap hopper
- ▶ Easy access to all vital parts from the front
- ▶ Large door opening for easy loading & unloading
- ▶ Cascade Drum - Patented drum
- ▶ Touch control available

- ▶ 500g extraction speed: less moisture for a more efficient drying process
- ▶ Improved durability: for your peace of mind

OPTIONS:

- ▶ Coin operated
- ▶ Stainless steel cabinet
- ▶ Liquid soap connection and pumps
- ▶ Water recovery kit
- ▶ Steam heating version
- ▶ 3rd water inlet

CONTROL:

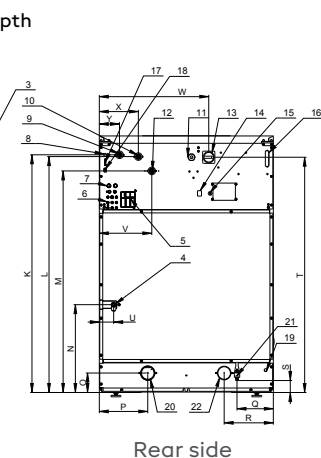
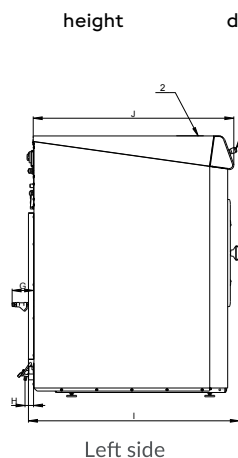
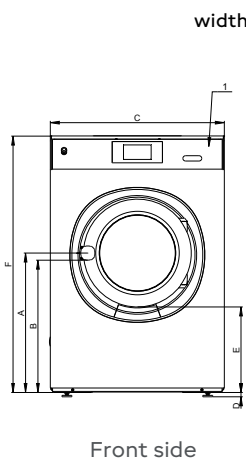
- ▶ XControl FLEX (VEND) - fully programmable and customisable cycles
User-friendly screen with operating instructions built in as part of the control
Complete control content available in 34 languages
- ▶ XControl FLEX PLUS (OPL)
User-friendly screen with operating instructions built in as part of the control

ONECARE^{cc} This machine is eligible for our all inclusive service solution, One Care.

FX LINE SPECIFICATIONS	FX80	FX105	FX135
Innerdrum			
Capacity 1:09	8,5kg / 19lbs	12kg / 26lbs	15kg / 33lbs
Capacity: 1:10	7,5kg / 17lbs	10,5kg / 23lbs	13,5kg / 30lbs
Volume	75l	105l	135l
Diameter	530 mm	620 mm	620 mm
Drum speed			
Wash	49rpm	49 rpm	49 rpm
Extraction	1298 rpm	1200 rpm	1151 rpm
G-Factor	500	500	460
Heating			
Electricity	3 - 7 kW	3 - 7 kW	3 - 7 kW
Steam	1 - 8 bar	1 - 8 bar	1 - 8 bar
Hot water	90 °C	90 °C	90 °C
Sound pressure level	≤65 dB (A)	≤65 dB (A)	≤65 dB (A)
Water valves connection	3/4" BSP	3/4" BSP	3/4" BSP
Water pressure	100 - 600 kPa	100 - 600 kPa	100 - 600 kPa
Rec. water pressure	300 - 500 kPa	300 - 500 kPa	300 - 500 kPa
Water inlet	20 l/min	20 l/min	20 l/min
Drain valve	76 outer Ø mm	76 outer Ø mm	76 outer Ø mm
Flow amount with drain valve	210 l/min	210 l/min	210 l/min
Steam valve connection	1/2" BSP	1/2" BSP	1/2" BSP
Steam pressure	100 - 800 kPa	100 - 800 kPa	100 - 800 kPa
Transport Data			
Packed HxWxD	1245x750x840mm	1345x835x840mm	1345x835x985mm
Gross weight	200 kg	235 kg	275 kg

DIMENSIONS

	A	B	C	D	E	F	G	H	I	J	K	L	M	N	O	P	Q	S	T	U	V	W	X	Y
FX80	612	564	710	24	349	1135	180	48	790	726	1030	1030	940	480	88	230	203	67	1030	42	293	390	218	113
FX105	648	600	795	24	342	1245	180	48	795	726	1140	1140	1050	506	88	230	203	67	1140	42	293	475	218	113
FX135	648	600	795	24	342	1245	180	48	945	876	1140	1140	1050	506	88	230	203	67	1140	42	293	475	218	113



1. Control panel
2. Soap dispenser
3. Central stop button
4. Steam connection
5. Air relieve
6. Liquid soap connection
7. Recycle water inlet
8. Recycled water valve cable inlet
9. Cold water inlet, soft
10. Cold water inlet, hard
11. Electrical connection
12. Hot water inlet
13. Main switch
14. Heating change-over switch
15. Liquid soap pump electrical connection
16. Fuses
17. USB port - optional
18. PC programming connection
19. Discharge water cable inlet
20. Drain valve - 3 in. [76 mm]
21. Water Sample - 1/2 in. (Applicable for wash bath sample-on request only)